

## MDS Task Force on Mild Cognitive Impairment in Parkinson's Disease: Critical Review of PD-MCI

Irene Litvan, MD,<sup>1\*</sup> Dag Aarsland, MD, PhD,<sup>2</sup> Charles H. Adler, MD,<sup>3</sup> Jennifer G. Goldman, MD, MS,<sup>4</sup> Jaime Kulisevsky, MD, PhD,<sup>5</sup> Brit Mollenhauer, MD,<sup>6</sup> Maria C. Rodriguez-Oroz, MD, PhD,<sup>7</sup> Alexander I. Tröster, PhD,<sup>8</sup> and Daniel Weintraub, MD<sup>9</sup>

<sup>1</sup>Division of Movement Disorders, Department of Neurology, University of Louisville, Louisville, Kentucky, USA, and Movement Disorders Program, Frazier Rehab Neuroscience Institute, Louisville, Kentucky, USA

<sup>2</sup>Centre for Age-Related Medicine, Stavanger University Hospital and Akershus University Hospital/University of Oslo, Oslo, Norway

<sup>3</sup>Parkinson's Disease and Movement Disorders Center, Department of Neurology, Mayo Clinic, Scottsdale, Arizona, USA

<sup>4</sup>Section of Parkinson Disease and Movement Disorders, Department of Neurological Sciences, Rush University Medical Center, Chicago, Illinois, USA

<sup>5</sup>Movement Disorders Unit, Neurology Department, Sant Pau Hospital and Institute of Biomedical Research (IIB Sant Pau), Universitat Autònoma de Barcelona and Centro de Investigación Biomédica en Red sobre Enfermedades Neurodegenerativas (CIBERNED), Madrid, Spain

<sup>6</sup>Paracelsus-Elena-Klinik, Kassel and Georg-August University Goettingen, Goettingen, Germany

<sup>7</sup>Department of Neurology, Clinic Universidad de Navarra, Medical School, Neuroscience Center, CIMA, Pamplona, Centros de Investigación Biomédica en Red sobre Enfermedades Neurodegenerativas (CIBERNED), Madrid, Spain

<sup>8</sup>Department of Neurology, University of North Carolina at Chapel Hill School of Medicine, Chapel Hill, North Carolina, USA

<sup>9</sup>Departments of Psychiatry and Neurology, University of Pennsylvania School of Medicine, and Parkinson's Disease and Mental Illness Research, Education and Clinical Centers (PADRECC and MIRECC), Philadelphia Veterans Affairs Medical Center, Philadelphia, Pennsylvania, USA

**ABSTRACT:** There is controversy regarding the definition and characteristics of mild cognitive impairment in Parkinson's disease. The Movement Disorder Society commissioned a Task Force to critically evaluate the literature and determine the frequency and characteristics of Parkinson's disease–mild cognitive impairment and its association with dementia. A comprehensive PubMed literature review was conducted using systematic inclusion and exclusion criteria. A mean of 26.7% (range, 18.9%–38.2%) of nondemented patients with Parkinson's disease have mild cognitive impairment. The frequency of Parkinson's disease–mild cognitive impairment increases with age, disease duration, and disease severity. Impairments occur in a range of cognitive domains, but single domain impairment is more common than multiple domain impairment, and within single domain impairment, nonamnesic is more

common than amnesic impairment. A high proportion of patients with Parkinson's disease–mild cognitive impairment progress to dementia in a relatively short period of time. The primary conclusions of the Task Force are that: (1) Parkinson's disease–mild cognitive impairment is common, (2) there is significant heterogeneity within Parkinson's disease–mild cognitive impairment in the number and types of cognitive domain impairments, (3) Parkinson's disease–mild cognitive impairment appears to place patients at risk of progressing to dementia, and (4) formal diagnostic criteria for Parkinson's disease–mild cognitive impairment are needed. © 2011 *Movement Disorder Society*

**Key Words:** mild cognitive impairment; Parkinson's disease; systematic review

\*Correspondence to: Prof. Irene Litvan, Movement Disorders, Department of Neurology, University of Louisville School of Medicine, 220 Abraham Flexner Way, Ste. 1503, Louisville, KY 40241, USA; i.litvan@louisville.edu

Current address for Maria C. Rodriguez-Oroz: Department of Neurology, Hospital Donostia and BioDonostia, San Sebastian, Spain.

**Relevant conflicts of interest/financial disclosures:** Irene Litvan was funded by 5R01AG024040-04. Charles Adler has been a consultant for Ipsen and Merck Serono, has been on the advisory boards of Biogen Idec, Eli Lilly, Medtronic, and Merz, and has received grants from the Arizona Biomedical Research Commission and the Michael J. Fox Foundation. Alexander I. Tröster has been a consultant for Medtronic, Inc., St. Jude, and Boston Scientific, has been on the advisory boards of Medtronic, Inc. and St. Jude, has received honoraria from Medtronic and Boehringer Ingelheim, and has received grants from the National Parkinson Foundation, GlaxoSmithKline, and Medtronic, Inc.

Full financial disclosures and author roles may be found in the online version of this article.

**Received:** 28 February 2011; **Revised:** 9 May 2011; **Accepted:** 12 May 2011

**Published online 9 June 2011 in Wiley Online Library (wileyonlinelibrary.com). DOI: 10.1002/mds.23823**

Cognitive impairment is common in Parkinson's disease (PD), with long-term longitudinal studies reporting that most PD patients develop dementia (PDD).<sup>1-3</sup> The impact of PDD is substantial, with major consequences for functioning,<sup>4-6</sup> nursing home admission,<sup>7</sup> psychiatric morbidity,<sup>8</sup> caregiver burden,<sup>9,10</sup> and mortality.<sup>11,12</sup>

Mild cognitive impairment in PD (PD-MCI), defined as cognitive decline that is not normal for age but with essentially normal functional activities, also appears to be common, even at the time of PD diagnosis and prior to initiation of dopaminergic therapy.<sup>13</sup> Although the term *MCI* applied to PD is not without controversy,<sup>14,15</sup> it is more frequently used and more widely accepted than alternative terms. Identifying PD-MCI is important clinically, as these patients appear to be at increased risk for developing PDD.<sup>16</sup> The biological validity of PD-MCI is supported by preliminary structural<sup>17</sup> and functional<sup>18,19</sup> neuroimaging, electroencephalography,<sup>20,21</sup> and genetic,<sup>22,23</sup> cerebrospinal fluid,<sup>24-26</sup> and autopsy studies<sup>27</sup> showing an association between a range of neuropathophysiological variables and either cognitive impairment or cognitive decline in nondemented PD patients. From a scientific standpoint, studying PD-MCI offers insight into the neural substrate of the earliest stage of cognitive decline in PD, which may lead to early intervention and may guide drug development focused on preventing or delaying the onset of PDD.

Despite what is known about PD-MCI, the heterogeneity of cognitive deficits from the initial stages of the disease and the relative scarcity of longitudinal studies have made it difficult to definitively determine the following: (1) whether there are different and reproducible subtypes of PD-MCI, (2) what proportion of PD-MCI patients progress to PDD, (3) whether the term *MCI* can be defined and operationalized in PD to determine those patients at imminent risk of PDD, and (4) whether this risk differs on the basis of MCI subtype.

Given the critical importance of having uniform criteria for PD-MCI both for the identification and management of PD patients and for future therapeutic trials, the Movement Disorder Society (MDS) commissioned a task force to: (1) critically evaluate the literature, (2) more accurately determine the frequency and characteristics of PD-MCI and its conversion rate to PDD, and (3) propose formal diagnostic criteria for PD-MCI. The present article deals with the first 2 of these issues because they are necessary to address prior to proposing new criteria. Criteria and guidelines for the definition and ascertainment of MCI in PD based on the present "state of the art" will be addressed in a future article.

## Materials and Methods

### Literature Search and Selection of Articles

A comprehensive review of the literature through September 1, 2010, was conducted through Medline

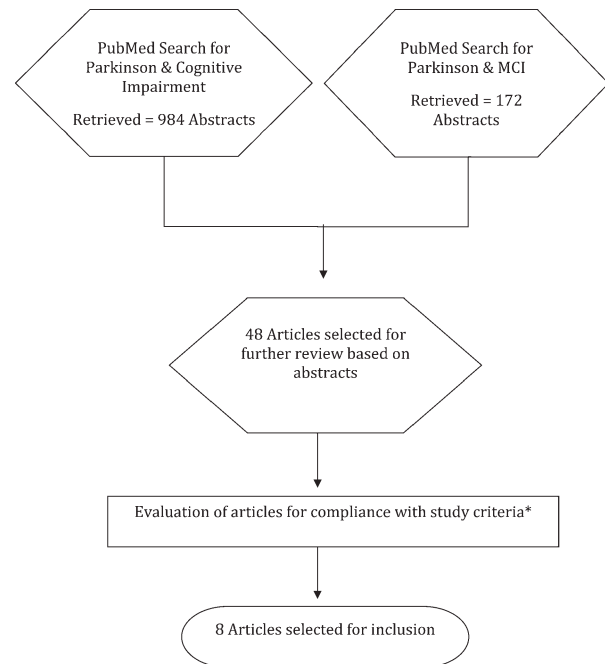


FIG. 1. Search results (study criteria: see text).

(PubMed) using combined free search terms that included "Parkinson," "cognitive impairment," and "mild cognitive impairment." The search was limited to empirical English-language articles. The search retrieved 984 articles using the key terms "Parkinson and cognitive impairment" and 172 articles using "Parkinson and mild cognitive impairment," with most of the latter articles already retrieved in the first search (Fig. 1).

Abstracts (or articles when abstracts lacked information on inclusion and exclusion criteria) were further scrutinized to include only those reports that fit study inclusion criteria: (1) a minimum of 100 nondemented PD patients in cross-sectional studies or 50 patients in prospective studies; (2) the presence of quantitative neuropsychological information covering at least 3 of 5 cognitive domains: memory, executive, attention/working memory, visuospatial, and language; and (3) comparison of PD with a local control group or use of normative values. Exclusion criteria were: (1) lack of definition of impaired cognition or dementia in review articles, guidelines, meta-analyses, and clinical therapeutic trials (unless the trial was negative); and (2) cognitive studies in demented or surgically treated PD patients and in patients with other neurological diseases and articles focused on depression, REM sleep behavior disorder, olfactory dysfunction, impulse control disorders, or psychosis without relevant cognitive data. Articles with abstracts that did not explicitly disclose all inclusion/exclusion criteria were included for further review.

Forty-eight articles met study inclusion criteria based on the review. The 48 articles were reviewed by 5 pairs

of task force members (approximately 10 articles per pair) who independently extracted key data from the identified articles.<sup>1,3,12,13,16,28–70</sup> The most common reasons for exclusion were lack of definition of impaired cognition or failure to explicitly exclude patients with dementia,<sup>1,3,29,30,33,42,44–46,48,49,51,55–57,59,62,64,66,67</sup> sample size not meeting inclusion criteria,<sup>31,32,35,37,52,58,60,71,72</sup> and evaluation of less than 3 domains of cognition.<sup>3,12,61,63,65,69</sup>

### Data Extraction and Quality Assessment

The task force members rated the articles using a structured form that included: (1) type of study (random, door to door; multiple sources; hospital based); (2) number of PD patients and percentage of patients with MCI; (3) demographics; (4) diagnostic criteria for PD, MCI, and PDD; (5) neuropsychological tests utilized; (6) number of cognitive domains tested; and (7) the presence of a normal control group or use of tests with normative values. For our final analysis, we selected articles that had clearly defined cognitive and PD diagnostic criteria, studied at least 3 cognitive domains with standard versions of published neuropsychological tests, either included a control group matched by age and education evaluated with the same protocol or utilized test normative values to define MCI, and did not include the same study population as another study (except for prospective studies).

## Results

A total of 8 articles met all the inclusion/exclusion criteria. The studies included a total of 776 PD patients from 6 cross-sectional studies and 198 from 2 prospective studies (Table 1) and varied widely regarding design, population, and criteria and methods for defining MCI and dementia.

### Cross-sectional Studies

Table 2 shows the neuropsychological tests and domains explored, MCI criteria used, and MCI subtypes found in each study. Overall, the studies demonstrate that PD-MCI is common in PD patients without dementia (mean cross-sectional prevalence, 26.7%; range, 18.9%–38.2%), its frequency increases with age and duration of PD, single-domain impairment is more common than multiple-domain impairment, and in the case of single-domain impairment, nonamnestic MCI is more common than amnestic MCI.

Aarsland et al<sup>28</sup> evaluated a community-based incident cohort of 196 nondemented, drug-naïve PD patients<sup>73</sup> and 201 healthy controls (HCs). The neuropsychological battery measured global cognition with the Mini-Mental State Examination (MMSE) and evaluated 3 cognitive domains with additional neuro-

psychological testing. The authors calculated *z* scores for the PD patients based on control data. They categorized MCI cases as 1 of 4 subtypes (Table 2). Compared with HCs, PD patients were impaired on all neuropsychological tests, and 18.9% met criteria for MCI (Table 1), with a risk ratio (RR) of 2.1 compared with controls. Older PD patients ( $\geq 65$  years) had a higher RR (2.6) of having MCI than younger cases ( $< 65$  years; RR, 1.5).

Foltynie et al<sup>34</sup> assessed cognitive function in an incident cohort of 159 PD patients.<sup>74</sup> Thirteen of the patients (8%)<sup>74</sup> scored  $< 24$  on the MMSE and were considered to have dementia, even though dementia at diagnosis was an exclusion criterion. Of the remaining 146 cases, 142 were included in the study, and more than one third were considered cognitively impaired, defined as scoring  $\geq 1$  SD below the normative mean in a pattern recognition task (temporal lobe impairment), the Tower of London task (frontostriatal impairment), or both tests (global impairment). The term MCI was not used in this study.

Hoops et al<sup>40</sup> compared the discriminant validity of the Montreal Cognitive Assessment (MoCA) and MMSE at diagnosing MCI in PD, using a neuropsychological test battery as a gold standard. Among a convenience sample of 132 PD cases at a movement disorders clinic,<sup>73</sup> 12.9% had PDD and 20% had MCI based on a test battery that evaluated 4 cognitive domains.

Mamikonyan et al<sup>47</sup> explored the cognitive performance of 106 PD patients (a convenience sample at a movement disorders clinic), who had intact global cognition based on their age- and education-adjusted MMSE score. Thirty-one patients (29.2%) were classified as having MCI, defined as scoring  $\geq 1.5$  SDs below the normative data in at least 1 of the 3 domains assessed. The authors concluded that cognitive impairment is frequent in PD patients with normal cognition based on MMSE score and that memory deficits are common at the stage of PD-MCI.

Muslimovic et al<sup>13</sup> studied 115 PD patients without “global cognitive deterioration,” defined as an MMSE score  $< 24$  and 70 elderly HCs in one of the most detailed investigations of cognition in nondemented PD patients. A comprehensive battery of 28 neuropsychological tests was administered, and PD patients were significantly impaired on 20 of these. Twenty-seven patients (23.5%) were cognitively impaired, defined as scoring  $\geq 2$  SDs below the normative mean on  $\geq 3$  cognitive tests, compared with 4% of HCs. The domains most commonly impaired were attention/executive function, psychomotor speed, and memory.

Pai et al<sup>53</sup> studied cognitive abilities in 102 nondemented PD patients recruited from a behavioral clinic. They used the Chinese version of the Cognitive Ability Screening Instrument, a comprehensive screening instrument with normative data that includes

TABLE 1. Demographics of studies that met systematic review study inclusion criteria

Authors	Sample size (n)		Age (y)		Education (y)		Disease duration (y)		
	Total	PD-NC	PD-MCI	PD-NC	PD-MCI	PD-NC	PD-MCI	PD-NC	PD-MCI
<b>Cross-sectional studies</b>									
Aarsland et al (2009) <sup>28</sup>	196	159 (81.1%)	37 (18.9%)	67.0 ± 9.4 <sup>a</sup>	70.2 ± 7.6 <sup>a</sup>	10.9 ± 3.2 <sup>a</sup>	11.2 ± 3.7 <sup>a</sup>	2.3 ± 1.7 <sup>a</sup>	2.4 ± 2.1 <sup>a</sup>
Foltynie et al (2004) <sup>34</sup>	142 (T = 159)	92 (64.8%)	50 (35.2%)	66.5 <sup>b</sup>	73.7 <sup>b</sup>	NA	NA	3.1	2.2
Hoops et al (2009) <sup>40</sup>	115 (T = 132)	92 (80.0%)	23 (20.0%)	63.9 ± 9.7	68.1 ± 9.2 <sup>c</sup>	16.5 ± 3.1 <sup>c</sup>	16.2 ± 3.1	5.5 ± 4.7	8.2 ± 5.9 <sup>c</sup>
Mamikonian et al (2009) <sup>47</sup>	106	75 (70.7%)	31 (29.2%)	64.6 ± 10.3 <sup>a,d</sup>	64.6 ± 10.3 <sup>a,d</sup>	15.6 ± 3.0 <sup>e,d</sup>	15.6 ± 3.0 <sup>e,d</sup>	6.5 ± 5.8 <sup>e,d</sup>	6.5 ± 5.8 <sup>e,d</sup>
Muslimovic et al (2005) <sup>13</sup>	115	88 (76.5%)	27 (23.5%)	64.9 ± 10.4 <sup>a</sup>	70.3 ± 8.1 <sup>a</sup>	11.6 ± 2.3	11.7 ± 2.7	1.5 ± 0.9	1.66 ± 0.9
Pai et al (2001) <sup>53</sup>	102	63 (61.8%)	39 (38.2%)	68.0 <sup>d</sup>	NA	6.2 <sup>d</sup>	NA	NA	NA
Total	776	569 (73.3%)	207 (26.7%)						
<b>Longitudinal studies</b>									
Janvin et al (2006) <sup>16</sup>	72 <sup>e,f</sup>	34 (47.2%) <sup>f</sup>	38 (52.8%) <sup>f</sup>	68.1 ± 9.2 <sup>a</sup>	73.2 <sup>a</sup>	10.2 ± 3.9 <sup>a</sup>	8.8 <sup>a</sup>	12.2 ± 4.6 <sup>a</sup>	11.2 <sup>a</sup>
Williams-Gray et al (2007) <sup>68g</sup>	126 <sup>f</sup>	41 (32.5%) <sup>g,h</sup>	72 (57.1%) <sup>h</sup>	NA	NA	NA	NA	NA	NA
Total	198	75 (38%)	110 (55.6%)						

n, Participants in study with Parkinson's disease (PD) who met inclusion criteria; PD-NC, PD without MCI; PD-MCI, PD with MCI; NA, data not available; T, total sample size includes demented patients; significant between-group (PD-NC vs PD-MCI) differences at <sup>a</sup>P < .05, <sup>b</sup>P < .001; <sup>c</sup>data include PD-MCI and PDD; <sup>d</sup>data of the whole sample, not specified by group; <sup>e</sup>59 completed follow-up (82%), of whom 24 developed dementia; <sup>f</sup>at baseline; <sup>g</sup>longitudinal study of Foltynie et al<sup>34</sup>; <sup>h</sup>at follow-up; <sup>i</sup>13 developed PDD (10.3%).

subscores for 5 cognitive domains. They found that 38.2% fulfilled MCI criteria, defined as  $\geq 1.5$  SDs below the mean in at least 1 subtest.

### Longitudinal Studies

One of the studies reviewed<sup>68</sup> included the longitudinal assessment of patients on whom baseline data were reported in the cross-sectional studies selected above.<sup>34</sup> Janvin et al<sup>16</sup> conducted a longitudinal study of cognitive function in a community-based sample of 145 PD cases. Cases and controls were assessed at baseline and after 4 years. Patients with an MMSE score < 25 at baseline were considered demented and excluded. Of the 145 original cases, 72 PD nondemented cases were studied and compared with 38 HCs. After 4 years, for those who completed follow-up, dementia developed in 18 of 29 patients with PD-MCI at baseline (62.0%), compared with 6 of 30 PD patients with normal cognition at baseline (20.0%). This sample consisted of established PD patients, explaining the higher overall conversion rate to PDD over the same period used in the CamPaIn study (see below). The proportion converting to PDD was numerically higher among those with single-domain nonamnestic MCI (69%) compared with amnestic MCI (40%), and in a logistic regression analysis this MCI subtype at baseline predicted PDD development. The authors concluded that PD-MCI is a risk factor for developing PDD.

Williams-Gray et al<sup>68</sup> reassessed 126 nondemented PD patients between 3 and 5 years after their baseline evaluation and found that 10% developed PDD over this period. In this first wave of follow-up, older age, non-tremor-dominant phenotype, higher Unified Parkinson's Disease Rating Scale motor scores, and below-average performance on tests of semantic fluency, pentagon copying, spatial recognition memory, and Tower of London were associated with a more rapid rate of decline on the MMSE and progression to PDD. The authors concluded that posterior cortical cognitive deficits increased the risk for the development of PDD, whereas frontostriatal cognitive deficits did not.

### Discussion

The results of our systematic literature search and review are that: (1) an average of 26.7% (range, 18.9%–38.2%) of nondemented PD patients have PD-MCI, (2) cognitive deficits can be detected in some patients even at the time of PD diagnosis, (3) the frequency of MCI increases with age and with duration and severity of PD, (4) impairments can occur in a range of cognitive domains, (5) nonamnestic single-domain MCI is more common than amnestic single-domain MCI, and (6) PD-MCI appears to be a risk factor for the development of PDD.



TABLE 2. Assessments, PD-MCI criteria, and cognitive profiles

Author (year)	Domains (tests) assessed	Depression scale	MCI definition	Subjective impairment required	Cognitive profile found
Aarsland et al (2009) <sup>28</sup>	Verbal memory (California Verbal Learning Test II, total immediate recall, short-delay and long-delay free recall) Visuospatial ability (VOSP Silhouette and Cube subtests) Attention, executive function (animal names, MMSE Serial 7s, Stroop Color-Word Test)	MADRS	≥1.5 SDs below the z score in at least 1 of 3 domains	No	Total MCI: 18.9% 86.5% SD 62.2% nonamnestic MCI-SD
Foltynie et al (2004) <sup>34</sup>	Executive function (animal fluency and FAS fluency; modified Tower of London task) Spatial memory (CANTAB Spatial Recognition Subtest) Pattern recognition memory (CANTAB Pattern Recognition Memory Subtest)	No depression scale	≥1 SD below the normative data in ≥1 test	No	24.3% amnestic MCI-SD 13.5% MD 2.7% non-amnestic MCI-MD 10.8% amnestic MCI-MD Total MCI: 35.2%
Hoops et al (2009) <sup>40</sup>	Memory (Hopkins Verbal Learning Test, at least 1 of 2 measures impaired) Executive function (Tower of London) Attention (backward digit span) Visuospatial (cube copying) Memory (Hopkins Verbal Learning Test-Revised, abnormal if impaired in 2 of 3 components: immediate free recall total score, retention percentage, and recognition) Executive function (Stroop Color-Word Test; Tower of London; semantic verbal fluency, abnormal if impairment in 2 of 3 tests) Attention (Digit Span)	GDS-15 Inventory of Depression Symptomatology	≥1.5 SDs below normative data on tests on at least 2 cognitive domains <sup>112</sup> ≥1.5 SDs below normative data in ≥1 domain	Yes and preserved independent activities of daily living No	Total MCI: 20.0% MCI subtypes not described Total MCI: 29.2%
Mamikonyan et al (2009) <sup>47</sup>	Executive function (Trails A and B, Stroop Color-Word Test, Tower of London-Drexel test, modified Wisconsin Card Sorting Test, WAIS-R digit symbol test, Control Word Association Test, category fluency, WAIS-III similarities)	Hospital Anxiety and Depression Scale	≥2 SD below normative data on ≥3 neuropsychological tests	No	29% attention-SD 19.3% amnestic-SD 1.3% executive-SD 38.7% MD Total impaired: 23.5%

(Continued)

TABLE 2. (Continued)

Author (year)	Domains (tests) assessed	Depression scale	MCI definition	Subjective impairment required	Cognitive profile found
Pai et al (2001) <sup>53</sup>	Memory (Auditory Verbal Learning Test, Rivermead Behavioral Memory Test, Logical Memory Test, Wechsler Memory Scale III, Visual Association Test) Attention (WAIS-R digits forward and backward) Language (Boston Naming Test) Visuospatial and constructive function (Judgment of Line Orientation, Groningen Intelligence Test-spatial subtest, Clock Drawing Test) Memory (Cognitive Ability Screening Instrument, CASI subtest)	No depression scale	≥1.5 SDs below mean in ≥1 subtest	No	MCI subtypes not described (reported overall percentage of impaired tests)  Total MCI: 38.2%
Prospective Janvin et al (2006) <sup>16</sup>	Executive Function (CASI subtest)  Attention (CASI subtest) Language (CASI subtest) Visuospatial (CASI subtest)  Short-term visual memory (Benton Visual Retention Test) Visuospatial abilities (Judgment of Line Orientation test) Executive function (Stroop Color-Word Test)	BDI	≥1.5 SDs below control group in ≥1 test		MCI subtypes not described (reported overall percentage of impaired tests)  Total MCI: 52.8% <sup>a</sup> 60.5% SD <sup>a</sup>  44.7% nonamnesic-SD <sup>a</sup> (26.3% executive-SD; 18.4% visuospatial-SD) 15.8% amnesic-SD <sup>a</sup> 39.5% MD <sup>a</sup> Total MCI: 57.1% MCI <sup>b</sup> frontostriatal-SD ("predominant")
Williams-Gray et al (2007) <sup>68</sup>	Executive (animal fluency and FAS fluency, Tower of London) Pattern recognition memory (CANTAB Pattern Recognition Memory Subtest) Visuospatial (copy of MMSE pentagon) Spatial Memory (CANTAB Spatial Recognition Memory subtests)	BDI	≥1 SD below control group on ≥1 test	No	

BDI, Beck Depression Inventory; MADRS, Montgomery and Asberg Depression Rating Scale; GDS, Geriatric Depression Scale; VOSP, Visual Object and Spatial Perception Battery; MMSE, Mini-Mental Status Exam; WAIS-R, Wechsler Adult Intelligence Scale-Revised; WMS, Wechsler Memory Scale; WCST, Wisconsin Card Sorting Test; COWAT, Controlled Oral Word Association Test; CANTAB, Cambridge Neuropsychological Test Automated Battery; FAS fluency, test of fluency for words starting with F, A, and S; <sup>a</sup>at baseline; <sup>b</sup>at follow-up. Subjects with MCI were categorized as single domain only (cognitive impairment in a single domain, SD), multiple domain (cognitive impairment in 2 or more cognitive domains, MD), and overall impairment (sum of patients who had either single- or multiple-domain cognitive impairment).

## Prevalence and Correlates

The majority of PD patients will develop dementia.<sup>3,20</sup> The point prevalence of PDD is approximately 30%,<sup>75</sup> and the cumulative prevalence is at least 75% for PD patients surviving more than 10 years.<sup>2,3</sup> As MCI precedes PDD, the cumulative prevalence of PD-MCI must be at least as high as that of PDD. Consequently, our finding that approximately 27% of PD patients meet criteria for PD-MCI at any given time is not surprising. Our results are similar to those recently reported by Aarsland et al,<sup>76</sup> who used a common methodology for the definition of MCI on pooled data of more than 1000 nondemented PD patients from multiple centers and found that 25.8% (23.5%–28.2%) had MCI.

The lowest proportion of patients with MCI was found in a study of patients at early PD stages,<sup>13</sup> and the highest proportion in studies including cases with more advanced disease severity and duration.<sup>16,68,76</sup> The variation in MCI frequency in the articles reviewed also reflects differences in methodology (eg, study settings and populations, recruitment methods, MCI diagnostic criteria, number of cognitive domains assessed, number of tests used for each domain, and how impairment on a test was defined). That cognitive deficits in PD are detectible in some patients even at the time of clinical diagnosis highlights complexities in differentiating PD from dementia with Lewy bodies.

The correlates of PD-MCI have not been studied extensively. Of the studies included in this review, there was evidence that increasing age,<sup>34,47</sup> more severe PD,<sup>34,47</sup> late onset of disease,<sup>13</sup> and lower educational level<sup>53</sup> were associated with PD-MCI.

## Profile of Cognitive Impairment

Although the cognitive deficits in PD have traditionally been classified as being “subcortical” in nature<sup>77</sup> (ie, relatively greater impairments in executive abilities, information-processing speed, and working memory compared with episodic memory storage and language), our review has shown that a range of cognitive domains are impaired in PD patients without dementia. Other research in PD has demonstrated deficits in executive (ie, impaired planning and working memory),<sup>78</sup> visuospatial,<sup>79</sup> attentional,<sup>80</sup> memory,<sup>81</sup> and even language<sup>82–85</sup> abilities.

In all of the studies reviewed here, single-domain MCI was more common than multiple-domain MCI, and nonamnestic MCI was more common than amnestic MCI in patients with impairment in a single domain. Debate exists about the extent to which the mild memory and language deficits in PD are secondary to executive and working memory problems. In addition, as prospective studies using formal definitions for MCI subtypes are almost nonexistent, the

usefulness and predictive value of this PD-MCI classification structure is currently hypothetical.

## Epidemiology of Progression from PD-MCI to Dementia

The few longitudinal studies of nondemented PD patients have found that 20%–60% develop PDD over a period of 2–5 years,<sup>22,46,76,86–89</sup> and even newly diagnosed PD patients on average experience significant decline in a range of cognitive domains over a several-year period.<sup>49,90</sup> The finding that PD-MCI patients are at higher risk for developing dementia is consistent with a clinicopathologic study reporting cognitive impairment in the earliest stages of clinically manifested PD, possibly related to changes in brain stem monoaminergic nuclei or early involvement of forebrain cholinergic nuclei.<sup>91</sup>

Preliminary research suggests that the majority of PD-MCI cases convert to PDD over a several-year period.<sup>16,22,68</sup> The 2 longitudinal studies included in this review differed in terms of design and methodology. Williams-Gray et al<sup>68</sup> followed an incident cohort of nondemented PD patients in 2 waves but did not specifically examine progression from a state of “mild impairment” to PDD. The focus of this research to date has been to determine which demographic (increasing age), neuropsychological (semantic verbal fluency and visuospatial deficits), and genetic (*MAPT* H1/H1 tau genotype) factors predicted conversion to PDD in the second wave of follow-up.<sup>22</sup> The other study used a cross-sectional sample of survivors from a prevalence sample.<sup>16</sup> In this study, Janvin et al found that 62% of PD-MCI patients converted to PDD over a 4-year period, compared with 20% of PD patients with normal cognition. The frequency of conversion to PDD over a 4-year period was: multiple domain MCI, 63%; single, nonmemory domain MCI, 69%; single-domain, amnestic MCI, 40%; and normal cognition, 20%.

Regarding other risk factors, in one of the longitudinal studies reviewed, increasing severity of depression was associated with an increased risk of conversion from PD-MCI to PDD.<sup>16</sup> In other research not covered in this article, demographic and clinical correlates or risk factors for PDD development have included older age, male sex, lower educational level, longer duration of PD, and greater motor impairment.<sup>22,64,83,86,90,92,93</sup>

## Clinical Impact

PD-MCI appears to be a clinically significant syndrome, as even mild cognitive deficits or self-rated cognitive deficits in early PD are associated with functional impairment<sup>5,94</sup> and worse quality of life (QoL).<sup>95,96</sup> Thus, identification and intervention at the earliest stage of PD-MCI is a crucial unmet need for the overall care of PD patients. The high frequency of

MCI in PD highlights the need for clinicians to routinely screen for cognitive impairment in PD, as the results, including their prognostic implications, may influence clinical decision making. However, research in this area is preliminary, and additional studies are needed to validate measures that are sensitive to initial changes in independent activities of daily living (IADLs), QoL, and interpersonal relationships that can occur at the stage of PD-MCI.

### Complexities in the Assessment of Cognition in PD

Assessment of cognition in PD can be complicated by disease- or medication-related effects, such as bradykinesia, fatigue, sleepiness, and mood disorders, which can adversely affect test results regardless of cognitive abilities. Specifically, motor slowing (ie, bradykinesia) and resting or intentional tremor may lead to impaired performance on any timed test, whereas tremor can interfere with performance on any test requiring motor abilities (eg, use of a pencil to complete a task). However, there has been very little research examining the impact of these factors on cognitive performance specifically.

Another issue is that the definition of MCI forces a dichotomization (present-absent) of a continuous variable (cognitive test performance), and debate continues regarding the appropriate cutoff score and number of tests used to define PD-MCI. Caviness et al<sup>32</sup> reported that 21% of subjects had PD-MCI if an abnormality on multiple tests within a domain was required, but this rose to 42% if an abnormality on only 1 test was required. There is concern that the commonly used definitions of MCI may lack sensitivity to detect early cognitive decline (rather than impairment) in high-functioning persons.<sup>97</sup> Persons functioning at a high level (ie, above average) pre-morbidly have to experience sizeable declines before scoring at least 1.5 SDs below normative means. Consequently, a considerable proportion of such patients with cognitive decline would be classified as having “normal cognition.” Although it can be argued that high premorbid functioning protects against MCI in much the same manner as it does against dementia, this argument ignores that high-functioning persons may be in more demanding work or social settings, in which even small cognitive declines translate into subtle functional impairments. On the other hand, a key feature in diagnosing MCI pertains to a change in cognition. Thus, MCI is not just a value on a cognitive test relative to the mean; rather, it is critical that the person has experienced a change in cognition compared with baseline.

Additional unresolved issues are whether cognitive decline in PD is linear and whether different profiles of cognitive deficits may have a different evolution

and prognosis. Previous studies have noted that time to PDD diagnosis is highly variable<sup>98</sup> and that cognitive changes after relatively long-term follow-up are not too consistent.<sup>97</sup> Although a distinct evolution of different cognitive domains cannot be inferred from a study using only the MMSE, the reanalysis of data from a long-term prevalence study identified a variation in the slope of decline, specifically a rapid cognitive deterioration after a relatively stable period.<sup>99</sup> These data should be examined in light of neuroimaging<sup>18,19</sup> and clinical<sup>52,68</sup> data showing that the transition from MCI to dementia in PD is characterized by the addition of posterior cortical deficits on frontal-subcortical ones.

### Biomarkers

None of the reviewed articles examined biomarkers specifically as they pertain to PD-MCI. One of the incident cohorts included in this review underwent a second wave follow-up,<sup>22</sup> and in that research the tau *MAPT* H1/H1 genotype (but not the *COMT* genotype) was found to be a risk factor for PDD, a finding recently confirmed.<sup>23</sup> Other genetic polymorphisms (eg, *COMT* polymorphisms and the *BDNF* Val66Met genotype<sup>100,101</sup>) have been shown to be associated with impairments in specific cognitive domains or abilities in PD. Several CSF biomarkers for cognitive decline in PD have been proposed.<sup>102</sup> Recent research suggests decreased CSF  $\beta$ -amyloid (A $\beta$ ) 1–42 is associated with the early stages of cognitive decline in PD.<sup>24,26</sup> This decrease might be due to specific A $\beta$  plaque pathology, but it may be nonspecific, as A $\beta$  1–42 has been shown to be decreased in neurodegenerative disorders lacking distinct plaque pathology,<sup>103–105</sup> and in vivo plaque imaging (PET imaging with the A $\beta$ -binding Pittsburgh Compound B) showed no correlation between the plaque load and cognition in PD.<sup>106</sup> Instead, the findings suggested a different mechanism of A $\beta$  processing, perhaps due to synaptic  $\alpha$ -synuclein pathology.<sup>107,108</sup> A study using structural neuroimaging, including diffusion tensor imaging, reported white matter abnormalities in nondemented PD patients.<sup>108</sup> In another study<sup>17</sup> that classified patients as PD normal cognition (PD-NC), PD-MCI, or PDD and used 2 different imaging analyses, PD-MCI patients compared with PD-NC either had reduced gray matter in the prefrontal cortex and temporal lobes<sup>17</sup> or were found to have similar regional brain volumes. Using FDG-PET, a PD-related cognitive pattern in nondemented PD patients has been reported, characterized by metabolic reductions in frontal and parietal association areas and relative increases in the cerebellar vermis and dentate nuclei.<sup>109</sup> The pattern predicted memory and visuospatial performance, and in a subsequent study single-domain MCI patients had a PD-related cognitive pattern expression intermediate (but not



statistically significantly different) between normal and multiple-domain MCI patients.<sup>18</sup> Clearly, there is a need for prospective and longitudinal assessment of accessible biomarkers (including CSF, blood, and neuroimaging) and neuropathological examination to further address this issue.

## Conclusions and Future Directions

There has been limited research on the epidemiology and prognostic utility of PD-MCI as a clinical syndrome. Nonetheless, the studies selected for review here and other studies of PD-MCI not meeting inclusion criteria yield relatively consistent prevalence estimates of MCI and its subtypes. They also show that single-domain MCI is more common than multiple-domain MCI and that nonamnestic, single-domain MCI is more common than amnestic, single-domain MCI.

The task force has used this critical review of the literature and consensus of experts to formulate PD-MCI diagnostic criteria that will be published separately. Once diagnostic criteria for PD-MCI are proposed, prospective studies enrolling subjects with a wide range of premorbid ability will be needed to examine the predictive value of both MCI overall and MCI subtypes. Intervention trials can target MCI as a clinical syndrome, perhaps stratifying MCI by subtype to determine if particular interventions (pharmacological vs behavioral) have differential acute or long-term effects. Although it is not known if or how a diagnosis of PD-MCI should affect clinical management, at a minimum, these patients should be carefully monitored for ongoing cognitive decline. ■

## References

- Buter TC, van den Hout A, Matthews FE, Larsen JP, Brayne C, Aarsland D. Dementia and survival in Parkinson disease: a 12-year population study. *Neurology*. 2008;70:1017–1022.
- Hely MA, Reid WG, Adena MA, Halliday GM, Morris JG. The Sydney multicenter study of Parkinson's disease: the inevitability of dementia at 20 years. *Mov Disord*. 2008;23:837–844.
- Aarsland D, Andersen K, Larsen JP, Lolk A, Kragh-Sorensen P. Prevalence and characteristics of dementia in Parkinson disease: an 8-year prospective study. *Arch Neurol*. 2003;60:387–392.
- Bronnick K, Ehrh U, Emre M, et al. Attentional deficits affect activities of daily living in dementia-associated with Parkinson's disease. *J Neurol Neurosurg Psychiatry*. 2006;77:1136–1142.
- Rosenthal E, Brennan L, Xie S, et al. Association between cognition and function in patients with Parkinson disease with and without dementia. *Mov Disord*. 2010;25:1170–1176.
- Uc EY, Rizzo M, Anderson SW, Sparks JD, Rodnitzky RL, Dawson JD. Driving with distraction in Parkinson disease. *Neurology*. 2006;67:1774–1780.
- Aarsland D, Larsen JP, Tandberg E, Laake K. Predictors of nursing home placement in Parkinson's disease: a population-based, prospective study. *J Am Geriatr Soc*. 2000;48:938–942.
- Aarsland D, Bronnick K, Ehrh U, et al. Neuropsychiatric symptoms in patients with Parkinson's disease and dementia: frequency, profile and associated care giver stress. *J Neurol Neurosurg Psychiatry*. 2007;78:36–42.
- Aarsland D, Larsen JP, Karlsen K, Lim NG, Tandberg E. Mental symptoms in Parkinson's disease are important contributors to caregiver distress. *Int J Geriatr Psychiatry*. 1999;14:866–874.
- Schrag A, Hovris A, Morley D, Quinn N, Jahanshahi M. Caregiver-burden in parkinson's disease is closely associated with psychiatric symptoms, falls, and disability. *Parkinsonism Relat Disord*. 2006;12:35–41.
- Levy G, Tang MX, Louis ED, et al. The association of incident dementia with mortality in PD. *Neurology*. 2002;59:1708–1713.
- Lo RY, Tanner CM, Albers KB, et al. Clinical features in early Parkinson disease and survival. *Arch Neurol*. 2009;66:1353–1358.
- Muslimovic D, Post B, Speelman JD, Schmand B. Cognitive profile of patients with newly diagnosed Parkinson disease. *Neurology*. 2005;65:1239–1245.
- Troster AI. Neuropsychological characteristics of dementia with Lewy bodies and Parkinson's disease with dementia: differentiation, early detection, and implications for "mild cognitive impairment" and biomarkers. *Neuropsychol Rev*. 2008;18:103–119.
- Dubois B, Burn D, Goetz C, et al. Diagnostic procedures for Parkinson's disease dementia: recommendations from the movement disorder society task force. *Mov Disord*. 2007;22:2314–2324.
- Janvin CC, Larsen JP, Aarsland D, Hugdahl K. Subtypes of mild cognitive impairment in Parkinson's disease: progression to dementia. *Mov Disord*. 2006;21:1343–1349.
- Beyer MK, Janvin CC, Larsen JP, Aarsland D. A magnetic resonance imaging study of patients with Parkinson's disease with mild cognitive impairment and dementia using voxel-based morphometry. *J Neurol Neurosurg Psychiatry*. 2007;78:254–259.
- Huang C, Mattis P, Perrine K, Brown N, Dhawan V, Eidelberg D. Metabolic abnormalities associated with mild cognitive impairment in Parkinson disease. *Neurology*. 2008;70:1470–1477.
- Hosokai Y, Nishio Y, Hirayama K, et al. Distinct patterns of regional cerebral glucose metabolism in Parkinson's disease with and without mild cognitive impairment. *Mov Disord*. 2009;24:854–862.
- Onofrij M, Gambi D, Malatesta G, Ferracci F, Fulgente T. Electrophysiological techniques in the assessment of aging brain: lacunar state and differential diagnosis. *Eur Neurol*. 1989;29(Suppl 2):44–47.
- Caviness JN, Hentz JG, Evidente VG, et al. Both early and late cognitive dysfunction affects the electroencephalogram in Parkinson's disease. *Parkinsonism Relat Disord*. 2007;13:348–354.
- Williams-Gray CH, Evans JR, Goris A, et al. The distinct cognitive syndromes of Parkinson's disease: 5 year follow-up of the CamPaIGN cohort. *Brain*. 2009;132:2958–2969.
- Seto-Salvia N, Clarimon J, Pagonabarraga J, et al. Dementia Risk in Parkinson Disease: Disentangling the Role of MAPT Haplotypes. *Arch Neurol*. 2011;68:359–364.
- Alves G, Bronnick K, Aarsland D, et al. CSF amyloid- $\beta$  and tau proteins, and cognitive performance, in early and untreated Parkinson's Disease: the Norwegian ParkWest study. *J Neurol Neurosurg Psychiatry*. 2010;81:1080–1086.
- Ballard C, Jones EL, Londos E, Minthon L, Francis P, Aarsland D. alpha-Synuclein antibodies recognize a protein present at lower levels in the CSF of patients with dementia with Lewy bodies. *Int Psychogeriatr*. 2010;22:321–327.
- Siderowf A, Xie SX, Hurtig H, et al. CSF amyloid  $\beta$  1–42 predicts cognitive decline in Parkinson disease. *Neurology*. 2010;75:1055–1061.
- Adler CH, Caviness JN, Sabbagh MN, et al. Heterogeneous neuropathological findings in Parkinson's disease with mild cognitive impairment. *Acta Neuropathol*. 2010;120:827–828.
- Aarsland D, Bronnick K, Larsen JP, Tysnes OB, Alves G. Cognitive impairment in incident, untreated Parkinson disease: the Norwegian ParkWest study. *Neurology*. 2009;72:1121–1126.
- Athey RJ, Porter RW, Walker RW. Cognitive assessment of a representative community population with Parkinson's disease (PD) using the Cambridge Cognitive Assessment-Revised (CAMCOG-R). *Age Ageing*. 2005;34:268–273.
- Athey RJ, Walker RW. Demonstration of cognitive decline in Parkinson's disease using the Cambridge Cognitive Assessment (Revised) (CAMCOG-R). *Int J Geriatr Psychiatry*. 2006;21:977–982.

31. Caparros-Lefebvre D, Pecheux N, Petit V, Duhamel A, Petit H. Which factors predict cognitive decline in Parkinson's disease? *J Neurol Neurosurg Psychiatry*. 1995;58:51-55.
32. Caviness JN, Driver-Dunckley E, Connor DJ, et al. Defining mild cognitive impairment in Parkinson's disease. *Mov Disord*. 2007;22:1272-1277.
33. Cooper CA, Mikos AE, Wood MF, et al. Does laterality of motor impairment tell us something about cognition in Parkinson disease? *Parkinsonism Relat Disord*. 2009;15:315-317.
34. Foltynie T, Brayne CE, Robbins TW, Barker RA. The cognitive ability of an incident cohort of Parkinson's patients in the UK. The CamPaIGN study. *Brain*. 2004;127:550-560.
35. Gill DJ, Freshman A, Blender JA, Ravina B. The Montreal cognitive assessment as a screening tool for cognitive impairment in Parkinson's disease. *Mov Disord*. 2008;23:1043-1046.
36. Girotti F, Soliveri P, Carella F, et al. Dementia and cognitive impairment in Parkinson's disease. *J Neurol Neurosurg Psychiatry*. 1988;51:1498-1502.
37. Goldman WP, Baty JD, Buckles VD, Sahrman S, Morris JC. Cognitive and motor functioning in Parkinson disease: subjects with and without questionable dementia. *Arch Neurol*. 1998;55:674-680.
38. Hayashi R, Hanyu N, Tamaru F. Cognitive impairment in Parkinson's disease: a 6-year follow-up study. *Parkinsonism Relat Disord*. 1998;4:81-85.
39. Hobson P, Meara J. The detection of dementia and cognitive impairment in a community population of elderly people with Parkinson's disease by use of the CAMCOG neuropsychological test. *Age Ageing*. 1999;28:39-43.
40. Hoops S, Nazem S, Siderowf AD, et al. Validity of the MoCA and MMSE in the detection of MCI and dementia in Parkinson disease. *Neurology*. 2009;73:1738-1745.
41. Janvin C, Aarsland D, Larsen JP, Hugdahl K. Neuropsychological profile of patients with Parkinson's disease without dementia. *Dement Geriatr Cogn Disord*. 2003;15:126-131.
42. Janvin CC, Aarsland D, Larsen JP. Cognitive predictors of dementia in Parkinson's disease: a community-based, 4-year longitudinal study. *J Geriatr Psychiatry Neurol*. 2005;18:149-154.
43. Kalbe E, Calabrese P, Kohn N, et al. Screening for cognitive deficits in Parkinson's disease with the Parkinson neuropsychometric dementia assessment (PANDA) instrument. *Parkinsonism Relat Disord*. 2008;14:93-101.
44. Klepac N, Hajnsek S, Trkulja V. Cognitive performance in non-demented nonpsychotic Parkinson disease patients with or without a history of depression prior to the onset of motor symptoms. *J Geriatr Psychiatry Neurol*. 2010;23:15-26.
45. Locascio JJ, Corkin S, Growdon JH. Relation between clinical characteristics of Parkinson's disease and cognitive decline. *J Clin Exp Neuropsychol*. 2003;25:94-109.
46. Mahieux F, Fenelon G, Flahault A, Manificier MJ, Michelet D, Boller F. Neuropsychological prediction of dementia in Parkinson's disease. *J Neurol Neurosurg Psychiatry*. 1998;64:178-183.
47. Mamikonyan E, Moberg PJ, Siderowf A, et al. Mild cognitive impairment is common in Parkinson's disease patients with normal Mini-Mental State Examination (MMSE) scores. *Parkinsonism Relat Disord*. 2009;15:226-231.
48. Mavandadi S, Nazem S, Ten Have TR, et al. Use of latent variable modeling to delineate psychiatric and cognitive profiles in Parkinson disease. *Am J Geriatr Psychiatry*. 2009;17:986-995.
49. Muslimovic D, Post B, Speelman JD, De Haan RJ, Schmand B. Cognitive decline in Parkinson's disease: a prospective longitudinal study. *J Int Neuropsychol Soc*. 2009;15:426-437.
50. Nazem S, Siderowf AD, Duda JE, et al. Montreal cognitive assessment performance in patients with Parkinson's disease with "normal" global cognition according to mini-mental state examination score. *J Am Geriatr Soc*. 2009;57:304-308.
51. Oh JY, Kim YS, Choi BH, Sohn EH, Lee AY. Relationship between clinical phenotypes and cognitive impairment in Parkinson's disease (PD). *Arch Gerontol Geriatr*. 2009;49:351-354.
52. Pagonabarraga J, Kulisevsky J, Llebaria G, Garcia-Sanchez C, Pascual-Sedano B, Gironell A. Parkinson's disease-cognitive rating scale: a new cognitive scale specific for Parkinson's disease. *Mov Disord*. 2008;23:998-1005.
53. Pai MC, Chan SH. Education and cognitive decline in Parkinson's disease: a study of 102 patients. *Acta Neurol Scand*. 2001;103:243-247.
54. Palazzini E, Soliveri P, Filippini G, et al. Progression of motor and cognitive impairment in Parkinson's disease. *J Neurol*. 1995;242:535-540.
55. Pedersen KF, Larsen JP, Alves G, Aarsland D. Prevalence and clinical correlates of apathy in Parkinson's disease: a community-based study. *Parkinsonism Relat Disord*. 2009;15:295-299.
56. Riedel O, Klotsche J, Spottke A, et al. Cognitive impairment in 873 patients with idiopathic Parkinson's disease. Results from the German Study on Epidemiology of Parkinson's Disease with Dementia (GEPAD). *J Neurol*. 2008;255:255-264.
57. Riepe MW, Kassubek J, Tracik F, Ebersbach G. Screening for cognitive impairment in Parkinson's disease—which marker relates to disease severity? *J Neural Transm*. 2006;113:1463-1468.
58. Santangelo G, Trojano L, Vitale C, et al. A neuropsychological longitudinal study in Parkinson's patients with and without hallucinations. *Mov Disord*. 2007;22:2418-2425.
59. Santangelo G, Vitale C, Trojano L, Verde F, Grossi D, Barone P. Cognitive dysfunctions and pathological gambling in patients with Parkinson's disease. *Mov Disord*. 2009;24:899-905.
60. Starkstein SE, Bolduc PL, Mayberg HS, Preziosi TJ, Robinson RG. Cognitive impairments and depression in Parkinson's disease: a follow up study. *J Neurol Neurosurg Psychiatry*. 1990;53:597-602.
61. Taylor JP, Rowan EN, Lett D, O'Brien JT, McKeith IG, Burn DJ. Poor attentional function predicts cognitive decline in patients with non-demented Parkinson's disease independent of motor phenotype. *J Neurol Neurosurg Psychiatry*. 2008;79:1318-1323.
62. Uc EY, McDermott MP, Marder KS, et al. Incidence of and risk factors for cognitive impairment in an early Parkinson disease clinical trial cohort. *Neurology*. 2009;73:1469-1477.
63. van Rooden SM, Visser M, Verbaan D, Marinus J, van Hilten JJ. Patterns of motor and non-motor features in Parkinson's disease. *J Neurol Neurosurg Psychiatry*. 2009;80:846-850.
64. Verbaan D, Marinus J, Visser M, et al. Cognitive impairment in Parkinson's disease. *J Neurol Neurosurg Psychiatry*. 2007;78:1182-1187.
65. Verbaan D, van Rooden SM, Visser M, Marinus J, Emre M, van Hilten JJ. Psychotic and compulsive symptoms in Parkinson's disease. *Mov Disord*. 2009;24:738-744.
66. Verleden S, Vingerhoets G, Santens P. Heterogeneity of cognitive dysfunction in Parkinson's disease: a cohort study. *Eur Neurol*. 2007;58:34-40.
67. Vingerhoets G, Verleden S, Santens P, Miatton M, De Reuck J. Predictors of cognitive impairment in advanced Parkinson's disease. *J Neurol Neurosurg Psychiatry*. 2003;74:793-796.
68. Williams-Gray CH, Foltynie T, Brayne CE, Robbins TW, Barker RA. Evolution of cognitive dysfunction in an incident Parkinson's disease cohort. *Brain*. 2007;130:1787-1798.
69. Zadikoff C, Fox SH, Tang-Wai DF, et al. A comparison of the mini mental state exam to the Montreal cognitive assessment in identifying cognitive deficits in Parkinson's disease. *Mov Disord*. 2008;23:297-299.
70. Zakzanis KK, Freedman M. A neuropsychological comparison of demented and nondemented patients with Parkinson's disease. *Appl Neuropsychol*. 1999;6:129-146.
71. Hayashi A, Nagaoka M, Yamada K, Ichitani Y, Miake Y, Okado N. Maternal stress induces synaptic loss and developmental disabilities of offspring. *Int J Dev Neurosci*. 1998;16:209-216.
72. Elgh E, Domellof M, Linder J, Edstrom M, Stenlund H, Forsgren L. Cognitive function in early Parkinson's disease: a population-based study. *Eur J Neurol*. 2009;16:1278-1284.
73. Gelb DJ, Oliver E, Gilman S. Diagnostic criteria for Parkinson disease. *Arch Neurol*. 1999;56:33-39.
74. Gibb WR, Lees AJ. The relevance of the Lewy body to the pathogenesis of idiopathic Parkinson's disease. *J Neurol Neurosurg Psychiatry*. 1988;51:745-752.
75. Aarsland D, Zaccari J, Brayne C. A systematic review of prevalence studies of dementia in Parkinson's disease. *Mov Disord*. 2005;20:1255-1263.
76. Aarsland D, Bronnick K, Williams-Gray C, et al. Mild cognitive impairment in Parkinson disease: a multicenter pooled analysis. *Neurology*. 2010;75:1062-1069.

77. Pillon B, Deweer B, Agid Y, Dubois B. Explicit memory in Alzheimer's, Huntington's, and Parkinson's diseases. *Arch Neurol.* 1993;50:374-379.
78. Siegart RJ, Weatherall M, Taylor KD, Abernethy DA. A meta-analysis of performance on simple span and more complex working memory tasks in Parkinson's disease. *Neuropsychology.* 2008;22:450-461.
79. Cronin-Golomb A, Braun AE. Visuospatial dysfunction and problem solving in Parkinson's disease. *Neuropsychology.* 1997;11:44-52.
80. Dujardin K, Degreef JF, Rogelet P, Defebvre L, Destee A. Impairment of the supervisory attentional system in early untreated patients with Parkinson's disease. *J Neurol.* 1999;246:783-788.
81. Weintraub D, Moberg PJ, Culbertson WC, Duda JE, Stern MB. Evidence for impaired encoding and retrieval memory profiles in Parkinson disease. *Cogn Behav Neurol.* 2004;17:195-200.
82. Dubois B, Pillon B. Cognitive deficits in Parkinson's disease. *J Neurol.* 1997;244:2-8.
83. Green J, McDonald WM, Vitek JL, et al. Cognitive impairments in advanced PD without dementia. *Neurology.* 2002;59:1320-1324.
84. Levin BE, Katzen HL. Early cognitive changes and nondementing behavioral abnormalities in Parkinson's disease. *Adv Neurol.* 1995;65:85-95.
85. Lewis SJ, Cools R, Robbins TW, Dove A, Barker RA, Owen AM. Using executive heterogeneity to explore the nature of working memory deficits in Parkinson's disease. *Neuropsychologia.* 2003;41:645-654.
86. Aarsland D, Andersen K, Larsen JP, Lolk A, Nielsen H, Kragh-Sorensen P. Risk of dementia in Parkinson's disease: a community-based, prospective study. *Neurology.* 2001;56:730-736.
87. Levy G, Schupf N, Tang MX, et al. Combined effect of age and severity on the risk of dementia in Parkinson's disease. *Ann Neurol.* 2002;51:722-729.
88. Marder K, Tang MX, Cote L, Stern Y, Mayeux R. The frequency and associated risk factors for dementia in patients with Parkinson's disease. *Arch Neurol.* 1995;52:695-701.
89. Stern Y, Marder K, Tang MX, Mayeux R. Antecedent clinical features associated with dementia in Parkinson's disease. *Neurology.* 1993;43:1690-1692.
90. Kandiah N, Narasimhalu K, Lau PN, Seah SH, Au WL, Tan LC. Cognitive decline in early Parkinson's disease. *Mov Disord.* 2009;24:605-608.
91. Braak H, Rub U, Del Tredici K. Cognitive decline correlates with neuropathological stage in Parkinson's disease. *J Neurol. Sci.* 2006;248:255-258.
92. Aarsland D, Tandberg E, Larsen JP, Cummings JL. Frequency of dementia in Parkinson disease. *Arch Neurol.* 1996;53:538-542.
93. Tomer R, Levin BE, Weiner WJ. Side of onset of motor symptoms influences cognition in Parkinson's disease. *Ann Neurol.* 1993;34:579-584.
94. Martin RC, Okonkwo OC, Hill J, et al. Medical decision-making capacity in cognitively impaired Parkinson's disease patients without dementia. *Mov Disord.* 2008;23:1867-1874.
95. Klepac N, Trkulja V, Relja M, Babic T. Is quality of life in non-demented Parkinson's disease patients related to cognitive performance? A clinic-based cross-sectional study. *Eur J Neurol.* 2008;15:128-133.
96. Marras C, McDermott MP, Rochon PA, Tanner CM, Naglie G, Lang AE. Predictors of deterioration in health-related quality of life in Parkinson's disease: results from the DATATOP trial. *Mov Disord.* 2008;23:653-659; quiz 776.
97. Troster AI, Woods SP, Morgan EE. Assessing cognitive change in Parkinson's disease: development of practice effect-corrected reliable change indices. *Arch Clin Neuropsychol.* 2007;22:711-718.
98. Aarsland D, Kvaloy JT, Andersen K, et al. The effect of age of onset of PD on risk of dementia. *J Neurol.* 2007;254:38-45.
99. Aarsland D, Muniz G, Matthews F. Nonlinear decline of mini-mental state examination in Parkinson's disease. *Mov Disord.* 2010.
100. Foltynie T, Lewis SG, Goldberg TE, et al. The BDNF Val66Met polymorphism has a gender specific influence on planning ability in Parkinson's disease. *J Neurol.* 2005;252:833-838.
101. Guerini FR, Beghi E, Riboldazzi G, et al. BDNF Val66Met polymorphism is associated with cognitive impairment in Italian patients with Parkinson's disease. *Eur J Neurol.* 2009;16:1240-1245.
102. Mollenhauer B, Trenkwalder C. Neurochemical biomarkers in the differential diagnosis of movement disorders. *Mov Disord.* 2009;24:1411-1426.
103. Otto M, Esselmann H, Schulz-Schaeffer W, et al. Decreased beta-amyloid1-42 in cerebrospinal fluid of patients with Creutzfeldt-Jakob disease. *Neurology.* 2000;54:1099-1102.
104. Holmberg B, Johnels B, Blennow K, Rosengren L. Cerebrospinal fluid Abeta42 is reduced in multiple system atrophy but normal in Parkinson's disease and progressive supranuclear palsy. *Mov Disord.* 2003;18:186-190.
105. Noguchi M, Yoshita M, Matsumoto Y, Ono K, Iwasa K, Yamada M. Decreased beta-amyloid peptide42 in cerebrospinal fluid of patients with progressive supranuclear palsy and corticobasal degeneration. *J Neurol. Sci.* 2005;237:61-65.
106. Gomperts SN, Rentz DM, Moran E, et al. Imaging amyloid deposition in Lewy body diseases. *Neurology.* 2008;71:903-910.
107. Kramer ML, Schulz-Schaeffer WJ. Presynaptic alpha-synuclein aggregates, not Lewy bodies, cause neurodegeneration in dementia with Lewy bodies. *J Neurosci.* 2007;27:1405-1410.
108. Schulz-Schaeffer WJ. The synaptic pathology of alpha-synuclein aggregation in dementia with Lewy bodies, Parkinson's disease and Parkinson's disease dementia. *Acta Neuropathol.* 2010;120:131-143.
109. Huang C, Mattis P, Tang C, Perrine K, Carbon M, Eidelberg D. Metabolic brain networks associated with cognitive function in Parkinson's disease. *Neuroimage.* 2007;34:714-723.